

Donore Lands

Donore Project Consultative Forum

25th April'24

rev. B

St. Teresa's Gardens

Demolition Works

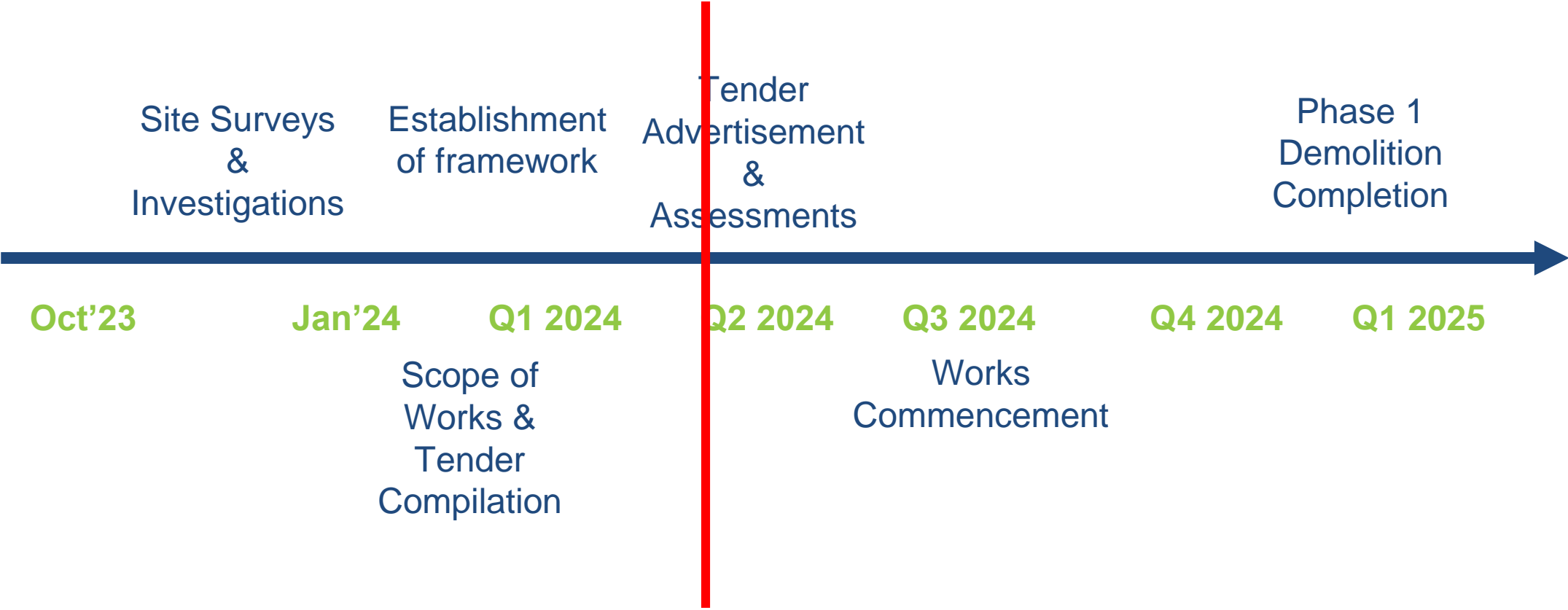
- Decommissioning of site CCTV services- underway
- Decommissioning of Network Cables- completed
- Final tender documents are under review
- Funding Application to the DHLGH is submitted.
- To be tendered in May 2024
- September is the targeted commencement date with a construction duration of 5 months.



Block DCC3 – close up view from the South

St. Teresa's Gardens

Demolition Works Phase 1 – Programme

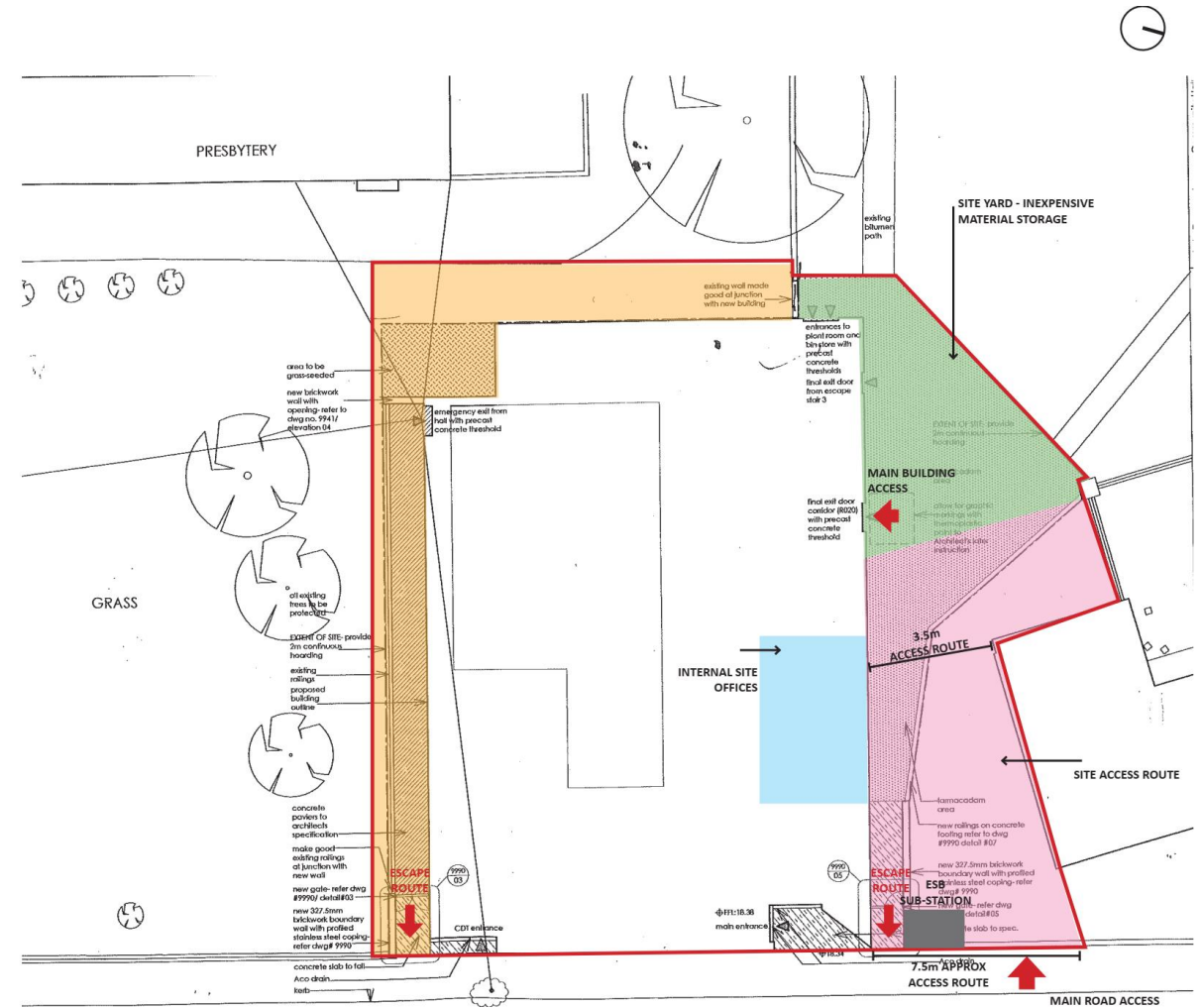


Donore Sporting Facilities

Community Centre Refurbishment Works

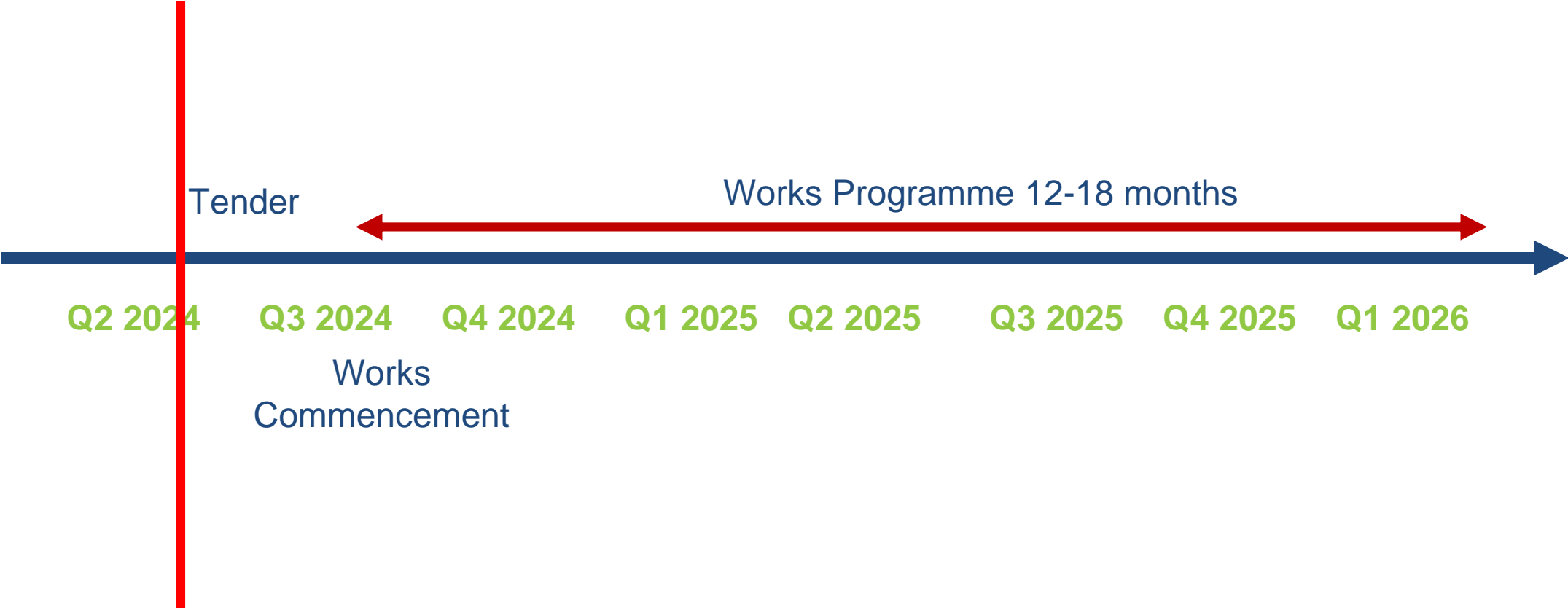
DCC CRES update: April-June 2024 - Development and completion of tender package. June 2024 - Tender to be issued to the market. August 2024 - Contract to be awarded to successful tenderer

- The Community Centre requires adjacent site compound area that conflicts with the determined route for site access and site services, required by the LDA development during construction, as per the grant of planning. An alternative route has been located for the LDA.
- DCC Housing and the LDA are coordinating with DCC CRES on the requirements for the construction working area around the Donore Community Centre.



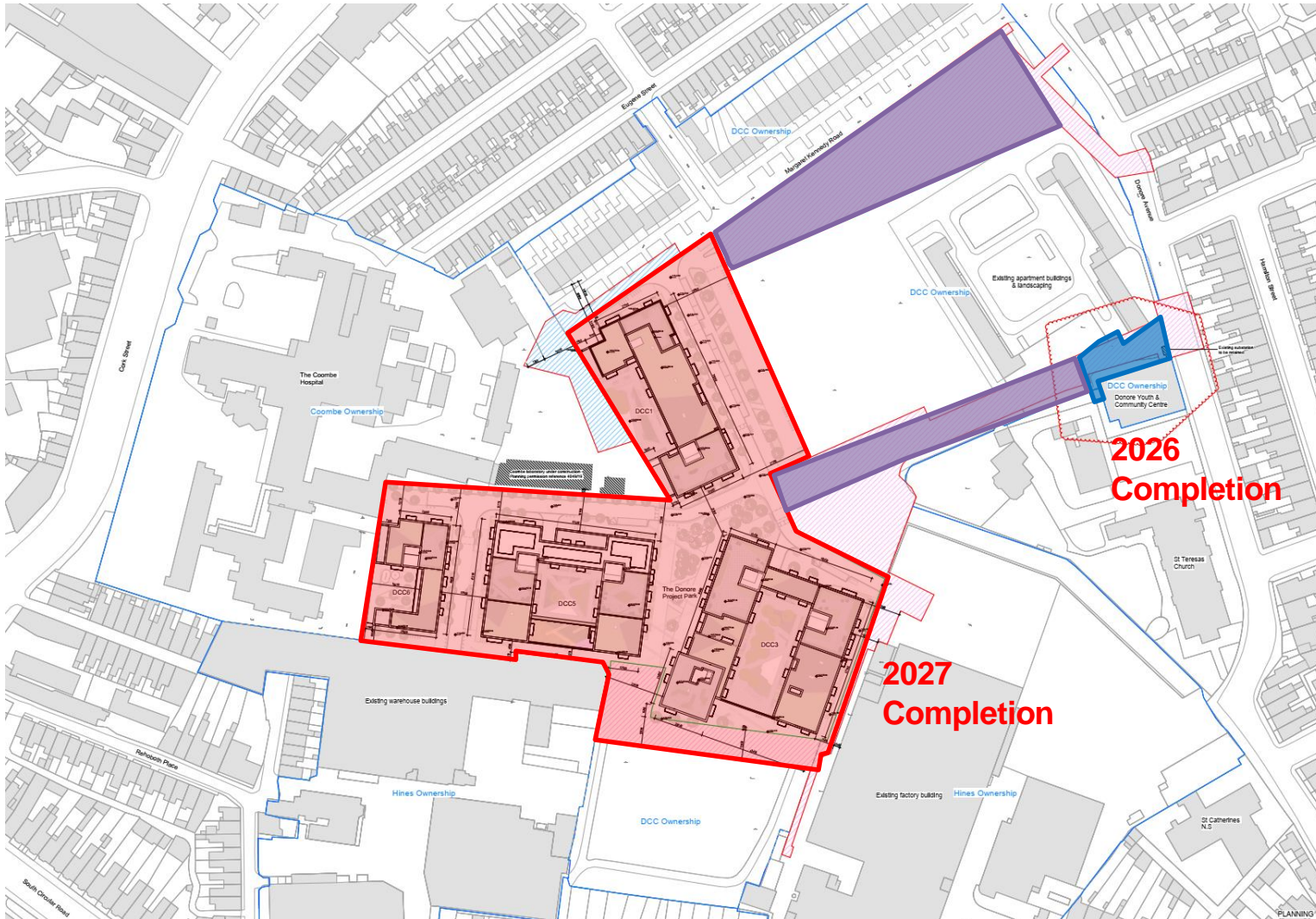
St. Teresa's Gardens

Donore Community Centre Refurbishment Works– Programme




Donore Sporting Facilities

Site Ancillary Works



- Site constraints to be taken into consideration in the sequencing of works are the infrastructure works adjacent to the pitch, site compound for the community centre and site access for all developments

 Development

 Site infrastructure works/ construction access

 Community Centre site compound up to Q1 2026

Donore Sporting Facilities

Pitch, Changing Facilities and Boxing Club


- Consultation meeting with Boxing Club regarding the new proposed facility in May.
- Brief has been prepared by DCC and Sporting Liberties and is currently under review by the LDA.
- The LDA, in partnership with DCC, are examining how best to deliver the joint infrastructure for these important social and recreational facilities and it will be brought forward via a Part 8 application.



Block DCC3 – close up view from the South

Donore Sporting Facilities

Pitch- Working Brief

 Comhairle Cathrach Bhaile Átha Cliath Dublin City Council		
Housing & Community Services, Block 1, Floor 3, Civic Offices, Wood Quay, Dublin 8, Ireland		
Pitch Playing Pitch Requirements		
Rev B- 12.03.24	issued to LDA	
Schedule of accomodation	Requirements	Notes
Previous pitch sizing under BG2 Application (see image adjacent)	140m x 84m (including run-off)	Sizing was too small for a full size GAA
Required pitch sizing uner a new application	130-145m long x 80-90m wide (excluding run-off)	Absolute minimum width is 80m, excluding run-off. Width to be maximised within constraints of site. Length not to be any shorter than 140m + run-off
Required Run-off space	5m space on all sides of *each pitch. 10 m between two pitches	*Each pitch refers to where there are multiple pitches provided within the full sized
Pitch Boundary	Sports double wire mesh up to 2.8m + a nylon ball-stop up to 4m high from ground level. (8m potentially high)	Openings in fence and connections to playground and community to be considered for spectators
Ground for Synthetic pitches	4G pitch finish was agreed with Hines Previously and we are to work to this. • For demolitions take out all of the foundations if possible <ul style="list-style-type: none"> • Leave it stoned 300mm below finished level • Drainage under pitch- allow for 600mm below finished layer of pitch • Ground make up: <ul style="list-style-type: none"> - Drainage - Hard-core - shock pad system 60mm dual tile carpet - Infill on top of carpet- usually organic material 	

The following 4 no. pitches are to be accomodated within the full-size pitch		
A) Full-size GAA	130-145m long x 80-90m wide (excluding run-off)	white lines
B) Juvenile soccer pitches- 2 no.	60-70m length x 45- 55m width	Potentially we could leave off these lines and use markers instead. yellow lines- Positioned cross ways across the main pitch. Width may have to be compromised
C) Full-size Soccer pitch	100m length x 80m width (excluding run-off)	Red lines. Positioned within the length of full-size pitch
Additional Requirements		
Ball Wall	dimensions TBC. Precedents include Alfie Byrne Rd and Westmanstown. Photos of precedents provided.	To be provided within the vicinity of the pitch, on DCC lands as part of DCC/LDA application or alternatively on church lands as part of the Hines application, TBC
Playground	Similar to the BG2 application	
Surrounding walking paths and planting	Similar to the BG2 application	



Thank you



Comhairle Cathrach
Bhaile Átha Cliath
Dublin City Council

Housing & Community Services,
Block 1, Floor 3,
Civic Offices, Wood Quay, Dublin 8